

OUTLOOK EXPRESS 6.0

This is a step by step setup sheet designed to help configure Outlook Express 6.0 to use your Smart Resort e-mail. Through the course of this setup please feel free to contact Smart Resort Support if you need assistance. The Support line is open Monday through Friday from 9 AM to 7 PM EST and on Saturday from 10 AM to 1 PM EST. You can reach Support at 888-843-6219. Please follow the steps below to configure Outlook Express 6.0.

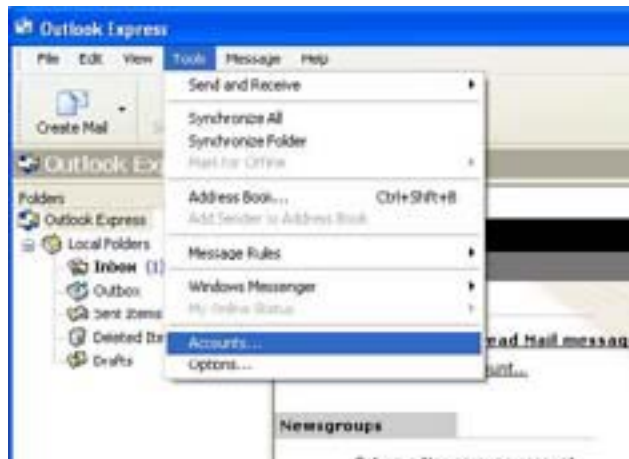
Step 1: Starting Outlook Express

Start Outlook Express by double-clicking the icon on your desktop, or click on the Start Menu and choose Outlook Express.



Step 2: Open Accounts

Click on *Tools* and then choose *Accounts*.



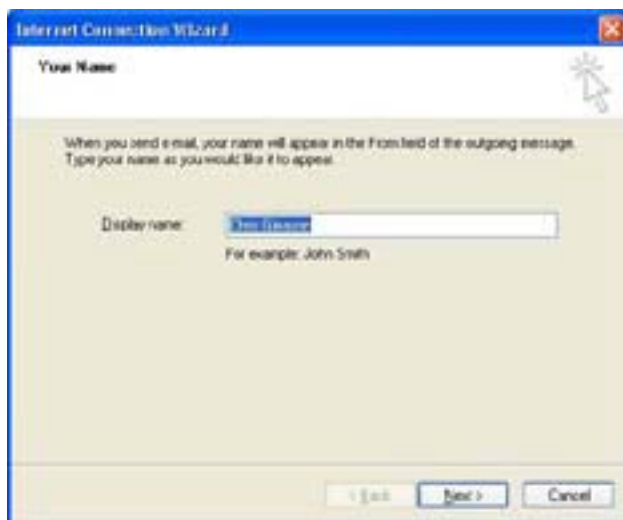
Step 3: Starting Mail Account Wizard

Click on the *Mail* tab. Click the *Add* button and choose *Mail*.



Step 4: Display Name

Once the New Connection Wizard begins enter a *display name*. This could be your first and last name, email address or a phrase that represents everyone that uses this account. (i.e. The Jones Family, Joe and Barb, etc.) Click the next button to continue.



Step 5: Email Address

Enter your Smart Resort *email address* in the box. Click next to continue.



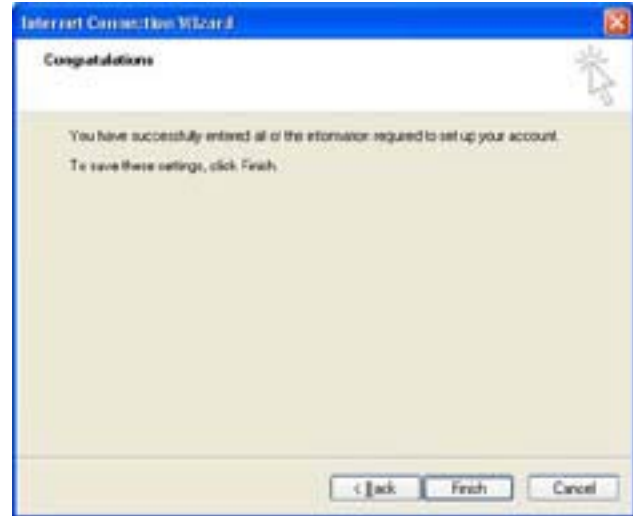
Step6: Mail Servers

Your incoming mail server is a POP3 server. Enter mail.smartresort.com where it says Incoming mail (POP3, IMAP or HTTP) server. Enter mail.smartresort.com where it says Outgoing mail (SMTP) server. Click Next to continue.



Step8: Finish

Congratulations, you have successfully created your account in Outlook Express. Click the Finish button to return to the Internet Accounts screen. Click the Close button to start using Outlook Express. If you have any problems please call Smart Resort Support at 888-843-6219.



Step7: Internet Mail Logon

Your **account name** should already be in the box where it says Account Name. Your account name is the part of your email address before @smartresort.com. Enter your **password** in the password box. Check the box that says Remember Password if you want your password saved. Do **NOT** check the box next to Log on using Secure Password Authentication. Click next to continue.

